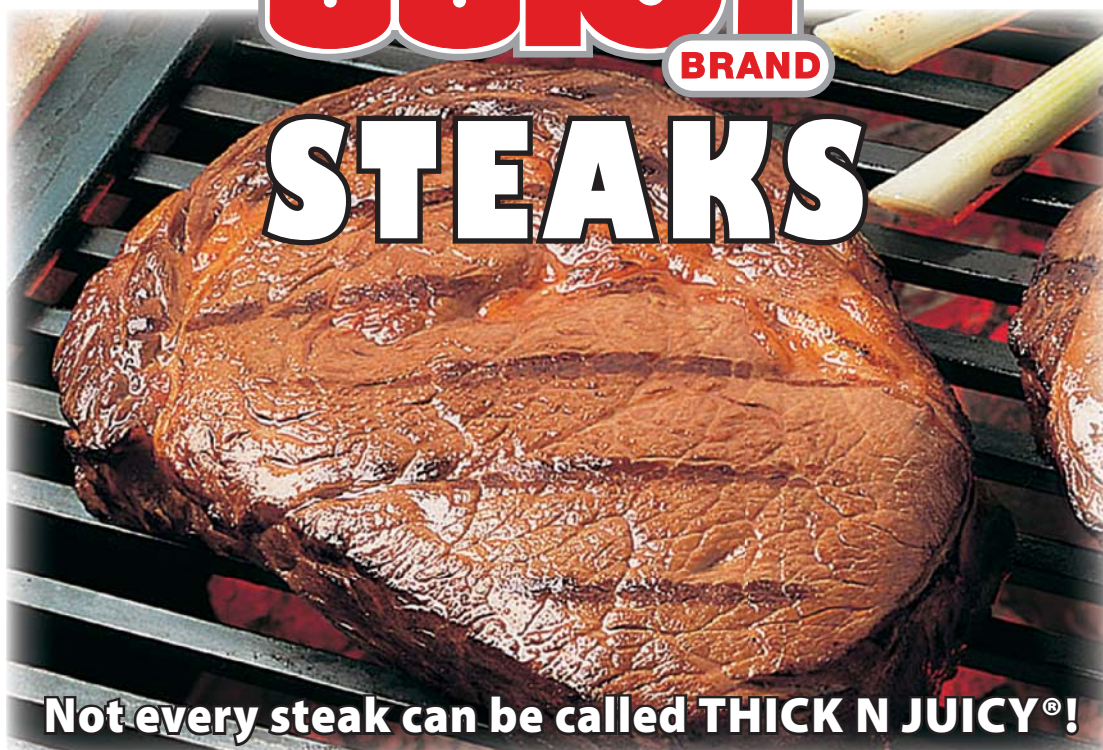


# THICK JUICY<sup>®</sup>

BRAND



**Not every steak can be called THICK N JUICY<sup>®</sup>!**

Holten's THICK N JUICY<sup>®</sup> Brand Steaks are made from USDA Choice primals, so you are assured of top quality, customer-pleasing steaks.

Holten offers a wide range of THICK N JUICY<sup>®</sup> Brand Steaks. The versatile Black Angus, Coulotte, and Flat Iron Steaks are great as breakfast steaks, as sandwiches, cut into strips for salads or fajitas, or served as an entrée with seasonings or steak sauces. Holten rounds out the THICK N JUICY<sup>®</sup> Brand selection with the classic favorites Ribeye, T-Bone, Porterhouse, and New York Strip.

ITEM #	DESCRIPTION	NAMP MBG#	PACK SIZE	CASE WGT
80260	6 oz <i>USDA Choice</i> Seasoned Black Angus Steak	N/A	36/6 oz	13.5 lbs
80160	6 oz <i>USDA Choice</i> Seasoned Top Sirloin Coulotte Steak	1184D	32/6 oz	12 lbs
80180	8 oz <i>USDA Choice</i> Seasoned Top Sirloin Coulotte Steak	1184D	24/8 oz	12 lbs
80185	8 oz <i>USDA Choice</i> Seasoned Top Sirloin Coulotte Steak	1184D	10/8 oz	5 lbs
80110	10 oz <i>USDA Choice</i> Seasoned Top Sirloin Coulotte Steak	1184D	16/10 oz	10 lbs
80440	4 oz <i>USDA Choice</i> Seasoned Black Angus Flat Iron Steak	1114D	40/4 oz	10 lbs
80460	6 oz <i>USDA Choice</i> Seasoned Black Angus Flat Iron Steak	1114D	28/6 oz	10.5 lbs
80465	6 oz <i>USDA Choice</i> Seasoned Black Angus Flat Iron Steak	1114D	14/6 oz	5.25 lbs
80480	8 oz <i>USDA Choice</i> Seasoned Black Angus Flat Iron Steak	1114D	20/8 oz	10 lbs
80410	10 oz <i>USDA Choice</i> Seasoned Black Angus Flat Iron Steak	1114D	16/10 oz	10 lbs
80447	4 oz <i>USDA Choice</i> Black Angus Flat Iron Steak	1114D	40/4 oz	10 lbs
80467	6 oz <i>USDA Choice</i> Black Angus Flat Iron Steak	1114D	28/6 oz	10.5 lbs
80449	4 oz <i>USDA Choice</i> Seasoned Black Angus Ranch Steak	1114E	40/4 oz	10 lbs
80660	6 oz <i>USDA Choice</i> Ribeye Steak Clean	1112	28/6 oz	10.5 lbs
80612	12 oz <i>USDA Choice</i> Ribeye Steak 1" Lip On	1112B	14/12 oz	10.5 lbs
80760	6 oz <i>USDA Choice</i> Top Sirloin Steak	1184B	28/6 oz	10.5 lbs
80770	7 oz <i>USDA Choice</i> Top Sirloin Steak	1184B	24/7 oz	10.5 lbs
80780	8 oz <i>USDA Choice</i> Top Sirloin Steak	1184B	20/8 oz	10 lbs
80790	9 oz <i>USDA Choice</i> Top Sirloin Steak	1184B	20/9 oz	11.25 lbs
80710	10 oz <i>USDA Choice</i> Top Sirloin Steak	1184B	16/10 oz	10 lbs
80711	11 oz <i>USDA Choice</i> Top Sirloin Steak	1184B	16/11 oz	11 lbs
80713	14 oz <i>USDA Choice</i> Top Sirloin Steak	1184B	12/14 oz	10.5 lbs
80816	16 oz <i>USDA Choice</i> T-Bone Steak	1174	10/16 oz	10 lbs
80817	16 oz <i>USDA Choice</i> Porterhouse Steak	1173	10/16 oz	10 lbs
81062	6 oz <i>USDA Choice</i> New York Strip Steak 2/5.25 lb Bags	1180	28/6 oz	10.5 lbs
81080	8 oz <i>USDA Choice</i> New York Strip Steak	1180	20/8 oz	10 lbs

**HÖLTEN**  
MEATS

1682 Sauget Business Blvd.  
Sauget, IL 62206-1454

1-800-851-4684 Phone  
618-337-7266 Fax

[www.holtenmeat.com](http://www.holtenmeat.com)  
[info@holtenmeat.com](mailto:info@holtenmeat.com)

**THICK  
JUICY<sup>®</sup>**  
BRAND