

HÖLTEN MEATS STEAKS

Holten's quality steak products are the best value in the market! They are cut with automatic portioning equipment for exact portion cost and reduced labor, and are vacuum packed for extended shelf life. Each box contains exact number of portions consistently sized to ensure even case weights – no catch weights, so customers know their exact cost. Holten steaks are produced under a HACCP Program and pass through no less than 30 quality checks in our USDA-inspected SQF Level 3 Certified Total Quality Control plant. Holten steaks provide the end-user with consistent portion control, product safety, and ease of handling and cooking. Most important, Holten steaks have the great taste that keeps customers coming back again and again!

JUICY BRAND Signature Steaks

ITEM #	DESCRIPTION	MBG#	PACK SIZE	CASE WGT
82012	12 oz Seasoned New York Strip Steak Center-Cut	1179A	14/12 oz	10.5 lbs
82015	12 oz Seasoned New York Strip Steak Center-Cut (6/4.5lb Boxes)	1179A	36/12 oz (6/bx)	27 lbs
82083	8 oz Seasoned New York Strip Steak Center-Cut (6/4.5lb Boxes)	1179A	54/8 oz (9/bx)	27 lbs
82110	10 oz Seasoned Ribeye Steak 1" Lip-on	1112B	16/10 oz	10 lbs
82115	10 oz Seasoned Ribeye Steak 1" Lip-on (6/3.75lb Boxes)	1112B	36/10 oz (6/bx)	22.5 lbs
82210	10 oz Seasoned T-Bone Steak	1174	16/10 oz	10 lbs
82212	12 oz Seasoned T-Bone Steak	1174	14/12 oz	10.5 lbs
82211	12 oz Seasoned T-Bone Steak (6/4.5lb Boxes)	1174	36/12 oz (6/bx)	27 lbs
82216	16 oz Seasoned T-Bone Steak	1174	10/16 oz	10 lbs
82215	16 oz Seasoned T-Bone Steak (6/4lb Boxes)	1174	24/16 oz (4/bx)	24 lbs
80050	5 oz USDA Choice Filet of Sirloin Steak	1185B	32/5 oz	10 lbs
80080	8 oz USDA Choice Filet of Sirloin Steak	1185B	20/8 oz	10 lbs
80081	8 oz USDA Choice Filet of Sirloin Steak	1185B	20/8 oz	10 lbs

Just like **THICK N JUICY® Brand Beef Patties**, Holten's **THICK N JUICY® Brand Signature Steaks** aren't ordinary steaks. **THICK N JUICY® Brand Signature Steaks** seasoned steaks are marinated with Holten's special formula which helps to retain moisture and enhance flavor.




Product image courtesy of the Beef Checkoff, The Cattleman's Beef Board 

Holten's **THICK N JUICY® Steaks** are made from USDA Choice primals. The versatile Coulotte, Black Angus, Ranch, and Flat Iron Steaks are great as breakfast steaks, as sandwiches, cut into strips for salads or fajitas, or served as an entrée with seasonings or steak sauces. Holten also has the classic favorites like Top Sirloin!

THICK N JUICY® STEAKS



ITEM #	DESCRIPTION	MBG#	PACK SIZE	CASE WGT
80160	6 oz <i>USDA Choice</i> Seasoned Top Sirloin Coulotte Steak	1184D	32/6 oz	12 lbs
80166	6 oz <i>USDA Choice</i> Unseasoned Top Sirloin Coulotte Steak	1184D	32/6 oz	12 lbs
80180	8 oz <i>USDA Choice</i> Seasoned Top Sirloin Coulotte Steak	1184D	24/8 oz	12 lbs
80183	8 oz <i>USDA Choice</i> Seasoned Top Sirloin Coulotte Steak (6/5lb Boxes)	1184D	60/8 oz (10/bx)	30 lbs
80110	10 oz <i>USDA Choice</i> Seasoned Top Sirloin Coulotte Steak	1184D	16/10 oz	10 lbs
80260	6 oz <i>USDA Choice</i> Seasoned Black Angus Steak	N/A	36/6 oz	13.5 lbs
80247	4 oz <i>USDA Choice</i> Seasoned Black Angus Ranch Steak	1114E	40/4 oz	10 lbs
80267	6 oz <i>USDA Choice</i> Seasoned Black Angus Ranch Steak	1114E	32/6 oz	12 lbs
80287	8 oz <i>USDA Choice</i> Seasoned Black Angus Ranch Steak	1114E	24/8 oz	12 lbs
80277	7 oz <i>USDA Choice</i> Seasoned Black Angus Ranch Steak (Bulk Tray Packed)	1114E	40/7 oz	17.5 lbs
80440	4 oz <i>USDA Choice</i> Seasoned Black Angus Flat Iron Steak	1114D	40/4 oz	10 lbs
80460	6 oz <i>USDA Choice</i> Seasoned Black Angus Flat Iron Steak	1114D	28/6 oz	10.5 lbs
80463	6 oz <i>USDA Choice</i> Seasoned Black Angus Flat Iron Steak (6/4.5lb Boxes)	1114D	72/6 oz (12/bx)	27 lbs
80480	8 oz <i>USDA Choice</i> Seasoned Black Angus Flat Iron Steak	1114D	20/8 oz	10 lbs
80410	10 oz <i>USDA Choice</i> Seasoned Black Angus Flat Iron Steak	1114D	16/10 oz	10 lbs
80770	7 oz <i>USDA Choice</i> Top Sirloin Steak	1184B	24/7 oz	10.5 lbs

Product image courtesy of the Beef Checkoff, The Cattleman's Beef Board 

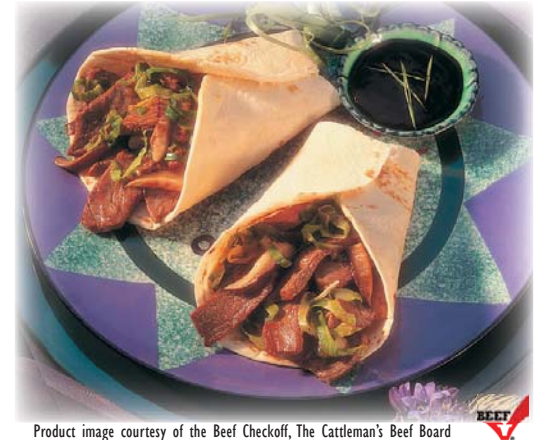
HÖLTEN MEATS STEAKS

SPECIALTY ITEMS

ITEM #	DESCRIPTION	MBG#	PACK SIZE	CASE WGHT
81015*	USDA Choice C.A.B.® Beef Stew Meat* 2/5#	135A	2/5 lbs	10 lbs
81115	USDA Choice Beef Stew Meat 2/5#	135A	2/5 lbs	10 lbs
81215	USDA Choice Beef Loin Tips 2/5#	N/A	2/5 lbs	10 lbs
81235	USDA Choice Beef Strips For Stir Fry 2/5#	N/A	2/5 lbs	10 lbs
81255	USDA Choice Beef Strips For Stir Fry 32/5 oz Bags	N/A	32/5 oz	10 lbs
81305	Beef Stew Meat 2/5#	135A	2/5 lbs	10 lbs
84040	4 oz Sliced Beef Liver Skinned & De-veined	1724	40/4 oz	10 lbs
84060	6 oz Sliced Beef Liver Skinned & De-veined	1724	27/6 oz	10 lbs
84080	8 oz Sliced Beef Liver Skinned & De-veined	1724	20/8 oz	10 lbs
86100	Vidalia® Onion Beef Meatloaf 5-lb Bag		3/5 lbs	15 lbs

* Certified Angus Beef® brand products are available only to users licensed by Certified Angus Beef® LLC. Contact Certified Angus Beef® LLC for more information.

Holten's specialty items provide easy menu flexibility! Holten's Beef Stew Meat and Beef Strips are great for stew, chili, soup, risottos, stir fries, stroganoff, beef & noodles, beef & peppers, goulash, fajitas, pitas, omelettes, specialty salads, and more – only your imagination is the limit!

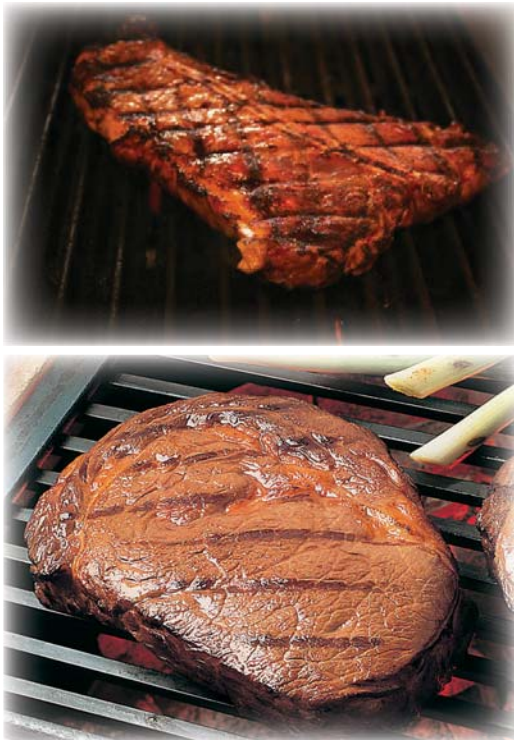


Product image courtesy of the Beef Checkoff, The Cattleman's Beef Board

With Holten's **Extra Value** Tenderized Steaks you have an opportunity to offer a value steak at a lesser price than traditional steaks. A special seasoning and tenderizer helps to prevent the steaks from being overcooked and drying out, and gives consistent flavor in every steak.

EXTRA VALUE STEAKS

ITEM #	DESCRIPTION	MBG#	PACK SIZE	CASE WGHT
85080	8 oz New York Strip Steak Tenderized	1180	20/8 oz	10 lbs
85083	8 oz New York Strip Steak Tenderized (6/4.5lb Boxes)	1180	54/8 oz (9/bx)	27 lbs
85010	10 oz New York Strip Steak Tenderized	1180	16/10 oz	10 lbs
85012	12 oz New York Strip Steak Tenderized	1180	14/12 oz	10.5 lbs
85606	6 oz Center-Cut New York Strip Steak Tenderized	1180A	28/6 oz	10.5 lbs
85140	4 oz Ribeye Steak Tenderized	1112	40/4 oz	10 lbs
85160	6 oz Ribeye Steak Tenderized	1112	28/6 oz	10.5 lbs
85162	6 oz Ribeye Steak Tenderized <i>Layer Packed</i>	1112	28/6 oz	10.5 lbs
85163	6 oz Ribeye Steak Tenderized (6/5.25lb Boxes)	1112	84/6 oz (14/bx)	31.5 lbs
85180	8 oz Ribeye Steak Tenderized	1112	20/8 oz	10 lbs
85110	10 oz Ribeye Steak Tenderized	1112	16/10 oz	10 lbs
85113	10 oz Ribeye Steak Tenderized (6/5lb Boxes)	1112	48/10 oz (8/bx)	30 lbs
85112	12 oz Ribeye Steak Tenderized	1112	14/12 oz	10.5 lbs
85280	8 oz Bone-In Shortloin Steak Tenderized	1174 MOD	20/8 oz	10 lbs
85210	10 oz Semi-Boneless T-Bone Steak Tenderized	1174 MOD	16/10 oz	10 lbs
85212	12 oz Semi-Boneless T-Bone Steak Tenderized	1174 MOD	14/12 oz	10.5 lbs
85216	16 oz Semi-Boneless T-Bone Steak Tenderized	1174 MOD	10/16 oz	10 lbs
85217	16 oz Bone-In Porterhouse Steak Tenderized	1173	10/16 oz	10 lbs
85221	20 oz Bone-In Porterhouse Steak Tenderized	1173	8/20 oz	10 lbs
85352	5 oz Seasoned Beef Tenderloin <i>Tray Packed</i>	1190A	36/5 oz	11.25 lbs



Product image courtesy of the Beef Checkoff, The Cattleman's Beef Board



Check highlighted items for availability before ordering

HÖLTEN
MEATS

1682 Sauget Business Blvd.
Sauget, IL 62206-1454

1-800-851-4684 Phone
618-337-7266 Fax

www.holtenmeat.com
info@holtenmeat.com