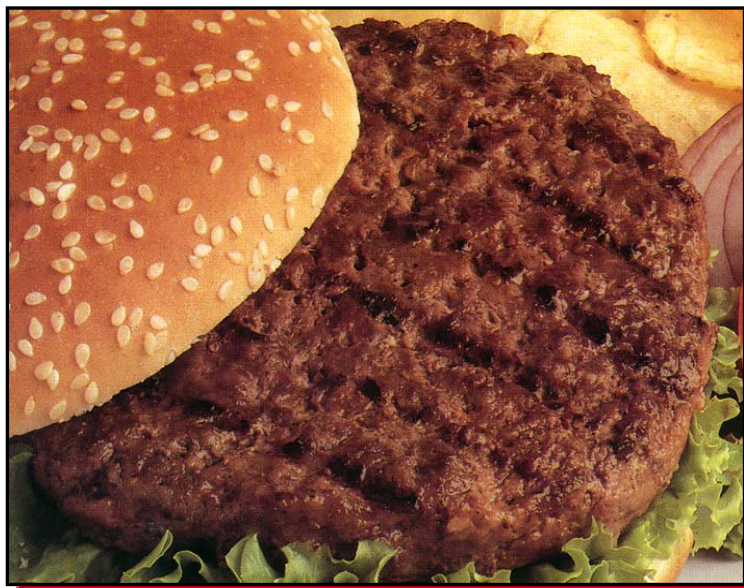


CLAIM TO FAME BEEF PATTIES

HOLTEN MEAT'S CLAIM TO FAME™ BEEF PATTIES HAVE A TASTE ALL THEIR OWN...AND THAT TASTE IS DELICIOUS!

- They're made with high quality beef and subtly seasoned to bring out the natural beef flavor meat-lovers go for.
- The special seasoning also allows them to remain juicy and tasty even when cooked safely to 160°F!
- Holten's revolutionary process ensures each patty will maintain the appearance and robust flavor found only in burgers cooked on the backyard grill.
- They're Individually Quick Frozen under HACCP procedures to lock in their great taste and to provide consistent portion control, product safety, and ease of handling.
- They're so quick and easy to fix...just pop them on the grill straight from the freezer and that's it!
- Try Claim to Fame™ Beef Patties and see why Holten is the choice of many restaurants, hotels, caterers, buffets, cafeterias, theme parks, and other food-service institutions!



CLAIM TO FAME™ BEEF PATTIES 75/25

SIZES: 2-1 STR (32526) 10#, 3-1 STR (32535) 10#, 4-1 (32548) 10#, 4-1 SP (12508) 10#, 4-1 NTL (12440) 10#, 5-1 (32550) 10#, 5-1 NTL (12450) 10#, 6-1 (32560) 10#, 8-1 (32580) 10#

CLAIM TO FAME™ BEEF PATTIES 80/20

SIZES: 2-1 (32020) 10#, 3-1 WD (12035) 15#, 4-1 HS (32044) 10#, 4-1 WD (32041) 10#, 4-1 SQ (32042) 10#, 5-1 (32054) 10#, 6-1 (32064) 10#, 8-1 (32081) 10#, 6 oz (12062) 10#

Serve Claim to Fame™ Beef Patties:

On a bun in a basket with curly fries for a quick lunch entree.

On a bun with sides of coleslaw, french fries, and a pickle for lunch or supper.

Without a bun on a plate with salad and fruit, or wrapped in a tortilla or lettuce, for a lighter entree.

Topped with bacon strips and a melted slice of American cheese for an American burger.

Topped with melted slices of American cheese, Swiss cheese, and cheddar cheese for a 3-Cheese burger.

Nutrition Facts #32548

Serving Size 1 patty (4 oz /113 g raw)	
Servings per Box	40 patties
Calories	330 Fat Cal 260
Amount/Serving	% DV*
Total Fat 29 g	45%
Saturated fat 11 g	55%
Cholesterol 86 mg	29%
Sodium 250 mg	10%
Total Carb. < 1 g	
Dietary fiber < 1 g	
Sugars < 1 g	
Protein 18g	

Vitamin A 0% • Calcium 2%
Vitamin C 0% • Iron 10%

* Percent Daily Values are based on a 2,000 calorie diet.

Nutrition Facts #32044

Serving Size 1 patty (4 oz/113g raw)	
Servings per Box	40 patties
Calories	270 Fat Cal 190
Amount/Serving	% DV*
Total Fat 21 g	32%
Saturated fat 9 g	45%
Cholesterol 65 mg	22%
Sodium 250 mg	10%
Total Carb. < 1 g	
Dietary fiber < 1 g	
Sugars < 1 g	
Protein 19 g	

Vitamin A 0% • Calcium 2%
Vitamin C 0% • Iron 10%

* Percent Daily Values are based on a 2,000 calorie diet.

Ingredients - Beef, water, spice, salt

Please visit us on the Web at www.holtenmeat.com

Storage Life - Patties are shipped frozen and will retain freshness for 90 days from code date (date of manufacture) when held at 0° F (-18° C) or colder.

Cooking Instructions - Always cook from frozen state! Cook on a pre-heated 350° F grill for 5 minutes. Turn and grill 3 more minutes or until internal temperature reaches 160° F.



1682 Sauget Business Blvd.
Sauget, IL 62206-1454

Phone (800) 851-4684
Cust. Serv. Fax (618) 337-7266